

Foreword:

1. Please read this manual carefully before installation and operation.
2. Please pay attention to the warnings, cautions and safety guidelines.
3. Please keep this manual.
4. To get best effect, please choose different distance, heating time and procedure according to different paint, operation condition and actual natural condition.

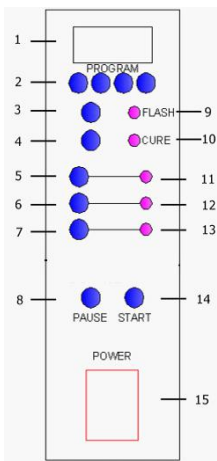
Warranty:

One year from the date of purchase

Specifications:

Input voltage: 220V 50/60HZ (1PH) // IR tubes: 3×1050W // Max power: 3200W // Rated input current: 15A // Covering area:1M x 0.8M // Temperature: 60°C--70°C // Timing range: 0—60MIN // Recommended drying distance: 50cm // Drying time: 7-17 minutes // Flash-off timer: √ // Cure timer: √ // Digital LED display: √ // Keypad operation: √ // Pneumatic height adjusting assistance: √ // Timer operation: By keypad

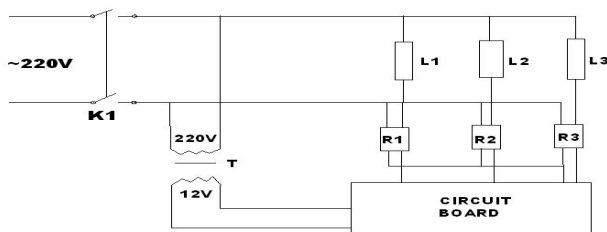
Operation procedures on control panel:



- a. Control panel:
- b. digital LED for time display.
- c. key for program (program: time combination of flash & cure time; 4 programs. After setting flash and cure time, press one program key for 3 seconds, it will save the time combination, if you want to use the program, just press the key.)
- d. key for increasing time
- e. key for decreasing time
- f. on-off key for lamp 1
- g. on-off key for lamp 2
- h. on-off key for lamp 3
- i. pause/stop key
- j. LED light for flash time setting

- k. LED light for cure time setting
- l. LED light for lamp 1
- m. LED light for lamp 2
- n. LED light for lamp 3
- o. start key
- p. power switch/circuit breaker

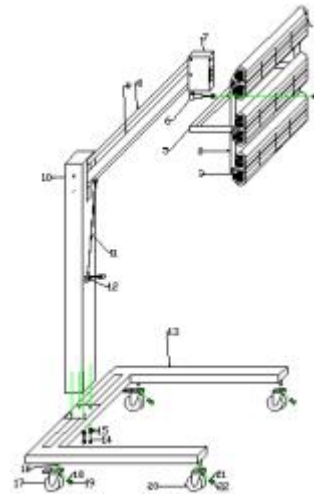
Electrical diagram



Installation instructions

- a. Install castors with brake 17 to stand's rear screw 16 and castors without brake to stand's front screw.

- b. Install column 10 with stand 13 by screws 14 and washers 15
- c. Install gas shock strut 11 with arm 9.
- d. Put cassette assembly 5 up to hanger 6, and screw down handle 4.



CAUTION:

- a. To adjust height of cassette assembly 5, please use ONE HAND to hold ARM 9, and then press GAS SHOCK STRUT HANDLE 12 Slightly & Carefully with THE OTHER HAND. Otherwise, arms 8 and 9 will spring up fiercely and cause injury.
- b. To avoid malfunction, do not circle or turn the silver-color core of gas shock strut 11.
- e. Connect lamp cables with corresponding sockets 7.

Attention:

- a. Power supply: 16Amp or up, 1 phase 220V/50Hz.
- b. Please use proper cable and switch socket to connect with power supply.

WARNING:

1. Before turning on this machine, please make sure to
2. Remove the cushions under each lamp tube
3. Remove stickers on each lamp grille.
4. Use a vacuum or blower to remove dust inside lamp.
5. Use a piece of clean cloth to clean the main reflector and side reflector.
6. Make sure the lamp tubes and the reflectors are totally dry.

Operation instructions:

► Move this dryer to obtain best distance between lamps and car body. Recommended distance is 30-50cm depending on actual condition. ► Adjust dryer height. ► Adjust lamp direction to make them parallel with treated panel. ► Press down castor brakes to lock the wheels, so as to prevent this dryer from moving and avoid possible accident. ► Turn on "power switch/circuit breaker" ► When "LED light for flash time setting" illuminates, press "key for increasing /decreasing time" to set flash timing. ► When "LED light for cure time setting" illuminates, press "key for increasing /decreasing time" to set cure timing. (Default time is 15mins for flash or cure time). ► Toggle on "on-off key for lamp 1", "on-off key for lamp 2" and/or "on-off key for lamp 3" ► Press "start key". ► If you want to pause, press "pause/stop key", then press "start key" if you want to continue. Pressing "pause/stop key" two times will stop working. ► It will give a "dee-dee" alarm when drying is finished.

Safety instructions:

The responsibility of our company cannot be engaged in case of damages due to the use of the dryer in the following situations:

- Modification or neutralization of safety elements,
- No respect of the recommendations listed in this manual,
- Modification of the technical specifications of the product,

Cautions:

1. Often clean reflector and lamp tube with moistened fabric or cotton and keep them clean. Do not use this dryer until 20 minutes after cleaning; otherwise, lamp tube will be broken easily.
2. This product must be earthed.
3. Do not use this product in a spray booth where there may be flammable gas.
4. Air must be decontaminated for working area if this product is used in spray booth.
5. It must be protected with a 10 AMP fuse.
6. Isolate power supply before removing grilles.
7. DO NOT move this machine during operation as this may lead to premature lamp tube failure.
8. This machine must not be pointed at personnel or easily flammable
9. Do not bump or knock this product.
10. Avoid hard objects to get inside of cassette.
11. Pay attention to uneven floor when moving this product and avoid overturning it.
12. Remove packing pieces from cassette before use.
13. Remove all things in front of lamp tube before turn on it.
14. Keep lamp tube away from paint spraying area at least 4 meters before starting this dryer.
15. Do not hold mains cable to move this product.

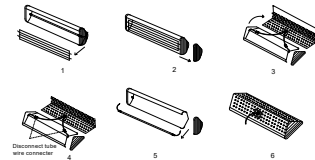
16. If lights do not work when turn on this product, connecter of lamp tube may be loose. Turn off power and connect lamp tube again.

Drying time (for reference only):

Paint type	Flash-off (Min)	Cure (Bake) (Min)
Waterborne basecoat	2-5	5
Filler/Stopper	2-5	5-7
Primer	2-5	6-8
Waterborne primer	2-5	8-10
Hi-build	2-5	10-12
Solid-color	2-5	11
Clear coat	2-5	12

Replacing lamp tube:

- a. Disconnect unit from mains power supply.
- b. Remove grille and side cover of cassette.
- c. Slacken heat dissipation cover that is in the back of cassette.
- d. Slacken and disconnect lamp tube wire connector.
- e. Take out the tube, replace or fit tube as the broken one, and connect wires as before.
- f. Refit grille, heat dissipation cover and side cover of cassette in turn.
- g. Use a soft cloth with solvent such as Methylated Spirits to clean reflector, side cover and tubes.

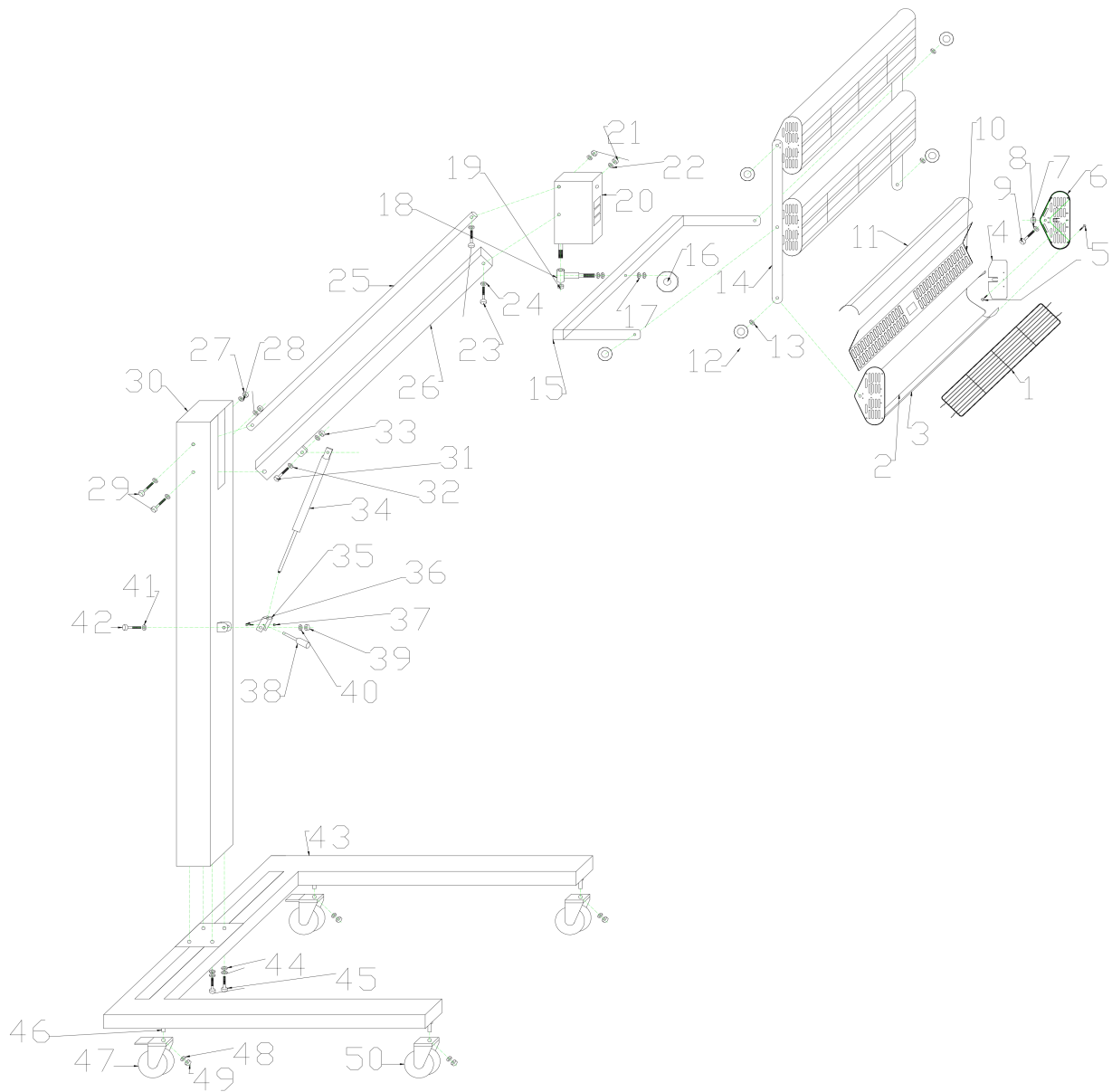


Troubleshooting:

<i>Problem</i>	<i>Possible cause</i>	<i>Possible solution</i>
Uneven cure	I.R cassettes not shaped to contours of repair	Adjust I.R. cassettes for even heat distribution
Solvent popping	1. Unit too close to panel; 2. Insufficient warm-up time; 3. Paint system has a fast thinner	1. Move unit further away; 2. Increase warm-up time; 3. Use a standard or slow thinner
Under cure or softness of paint film	1. Unit too far away; 2. Insufficient bake time; 3. Excessive film weight	1. Move unit closer; 2. Increase full bake time; 3. Apply lighter coats
Difficulty in polishing out dirt nibs	1. Too long on bake cycle; 2. Unit too close to panel	1. Reduce cure time; 2. Move unit further away.
Softness on edges of repair	Repair too large for I.R. unit	1. Split area into two; 2. Move unit for 2 nd application; 3. If warm-up is used, it will not be necessary on 2 nd application.

Note: only K1, K2, K3 & K3C has warm-up function.

Explosion diagram:



1	grille	14	linking board	27	Nut M10	40	Washer M10
2	Main reflector	15	U rack	28	Washer M10	41	Washer M10
3	Upper cassette side	16	handle M12	29	Bolt M10	42	Nut M10
4	End reflector	17	Washer M12	30	column	43	stand
5	Screw M4	18	hanger	31	Bolt M10	44	Washer M12
6	End cap	19	Nut M12	32	Washer M10	45	Bolt M12
7	Nut M8	20	socket box	33	cap M10	46	Bolt M12
8	Washer M8	21	Nut M10	34	gas strut	47	rear caster
9	Bolt M8	22	Washer M10	35	gas strut holder	48	Washer M12
10	cassette back	23	Bolt M10	36	Bolt M4	49	Nut M12
11	Lower cassette side	24	Washer M10	37	Nut M4	50	front caster
12	Adjustable handle M8	25	small arm	38	gas strut handle		
13	Washer M8	26	big arm	39	Nut M10		